



# 1-CHANNEL HEAVY DUTY

System features Dog Bone Connectors

## FEATURES

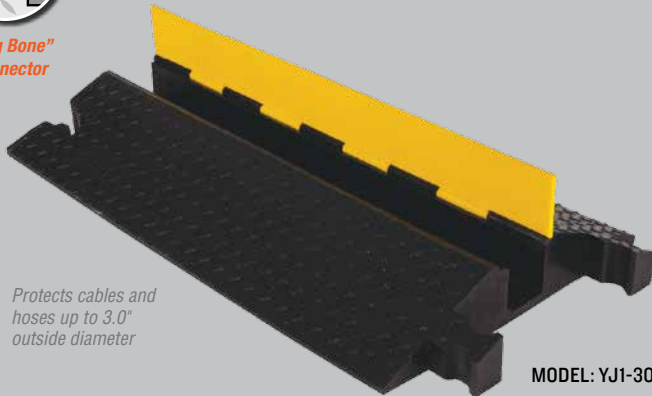
- Protects cables and hoses up to 5.0" outside dia.
- The "original" cable protector
- Dog Bone Connectors to extend to any desired length
- Thick lid and base allow for high volume of traffic
- Hinged lid for easy cable placement
- Modular interlocking design

YELLOW JACKET® 1-CHANNEL CABLE PROTECTORS with hinged lid protect valuable large electrical cables and hose lines from damage while providing a safer crossing in high volume traffic areas. Modular interlocking design is ideal for extremely heavy duty industrial areas.

## YELLOW JACKET HEAVY DUTY 1-CHANNEL - 3 INCH



"Dog Bone" Connector



Protects cables and hoses up to 3.0" outside diameter

MODEL: YJ1-300

### Lid/Base Color Options



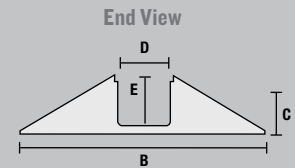
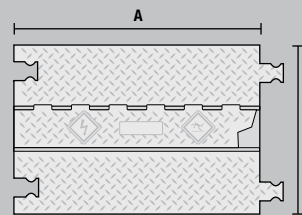
Yellow/Black = Y/B

### LOAD CAPACITY

Max load tested at 70°F (21°C)

7,990 lb./Tire (3,624 kg)

15,980 lb./Axle (7,248 kg)

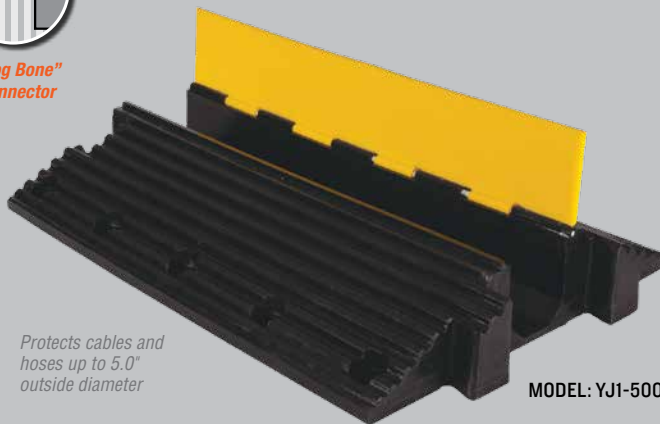


MODEL	A: LENGTH	B: WIDTH	C: HEIGHT	D: CHANNEL WIDTH	E: MAXIMUM OD	WEIGHT
YJ1-300	36 in. (91.44 cm)	20.625 in. (52.39 cm)	3.875 in. (9.84 cm)	3.0 in. (7.62 cm)	3.0 in. (7.62 cm)	42.6 lb. (19.3 kg)

## YELLOW JACKET HEAVY DUTY 1-CHANNEL - 5 INCH



"Dog Bone" Connector



Protects cables and hoses up to 5.0" outside diameter

MODEL: YJ1-500

### Lid/Base Color Options



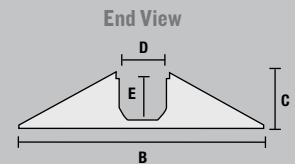
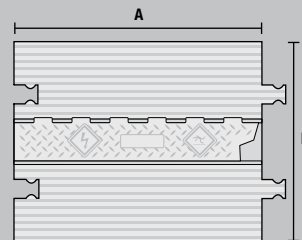
Yellow/Black = Y/B

### LOAD CAPACITY

Max load tested at 70°F (21°C)

9,435 lb./Tire (4,259 kg)

18,870 lb./Axle (8,518 kg)



MODEL	A: LENGTH	B: WIDTH	C: HEIGHT	D: CHANNEL WIDTH	E: MAXIMUM OD	WEIGHT
YJ1-500	36 in. (91.44 cm)	26.75 in. (67.95 cm)	5.875 in. (14.92 cm)	5 in. (12.7 cm)	5 in. (12.7 cm)	92 lb. (41.7 kg)