



- 6 Mil Thick Foil
- Reflects Radiant Heat
- Distinct Checker Pattern Surface Texture
- Continuous Operating Temperature of 260°C



Cut Cleanly
Scissors

Material
Foil Laminate

Grade
GRF

Wall Thickness
0,15mm

Put Ups

Nominal Size	Part #	Wall Thickness ±0,25m	Bulk Spool	Shop Spool	Available Colors	Kgs/ 100m
711,2mm	GRF28.0GL	0,15mm	45,7m	7,6m	Gold (GL)	12,10

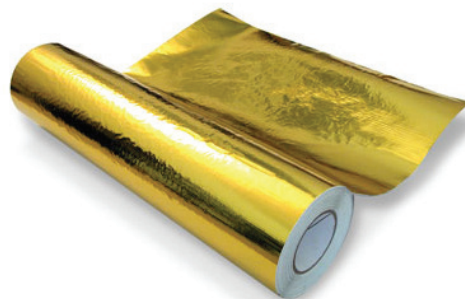
Radiant Heat Protection Up to 400°C

Gold Foil is made from lightweight aerospace material. This 6 mil thick foil has a fire resistant pressure sensitive adhesive that incorporates a fiber-glass backing for strength and tear resistance. The adhesive meets or exceeds the FAA 12-second vertical burn requirement.

This gold reflective foil reflects up to 400°C of radiant heat and has a continuous operating temp of 260°C. It will break down at 454°C of continuous radiant heat.

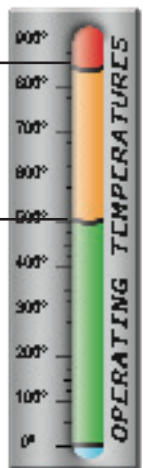
There is up to a 21°C gradient temperature drop across the 6 mil thick foil during normal operating temperatures. Key benefits: can easily be cut and configured to each chassis style; easy to repair, install and remove since it adheres to itself.

Colors Available:
Gold (GL)



Melt Point
ASTM D-2117
850°F (454°C)

Maximum Continuous
Mil-I-23053
500°F (260°C)



Gold Foil is self adhering and allows for easy installation, repair, and removal.



7, boulevard de l'Odéon
35740 Pacé - France
+33 2 23 30 05 15
www.CableOrganizer.fr





FLAMMABILITY

Rating _____

CHEMICAL RESISTANCE

1=No Effect 4=More Affected
2=Little Effect 5=Severely Affected
3=Affected

Aromatic Solvents _____
Aliphatic Solvents _____
Chlorinated Solvents _____
Weak Bases _____
Salts _____
Strong Bases _____
Salt Water 0-5-1926 _____
Hydraulic Fluid MIL-H-5606 _____
Lube Oil MIL-L-7808 _____
De-Icing Fluid MIL-A-8243 _____
Strong Acids _____
Strong Oxidants _____
Esters/Ketones _____
UV Light _____
Petroleum _____
Fungus ASTM G-21 _____
Halogen Free _____
RoHS _____
SVHC _____

PHYSICAL PROPERTIES

Monofilament Diameter _____ NA
ASTM D-204
Flammability Rating ____ Non Flammable
Recommended Cutting _____ Scissor
Colors _____ 1
Wall Thickness _____ .0,15mm
Tensile Strength (Yarn) _____
ASTM D-2256 Lbs
Specific Gravity ASTM D-792 _____ NA